



# ENGINEERED FOR SUPERIOR PERFORMANCE

*Stainless Steel Piping System for Liquids and Gases*





AQUApipe is a complete stainless steel piping system for liquid and gas conveyance in a wide range of applications. Our company has operated for over 20 years within the piping industry. During this time we have become a global leader in innovative design and manufacturing. Continued investment in R&D ensures user and installer feedback influences our innovations.

AQUApipe is a quick, clean, and simple system to install. The technology has evolved the piping industry and offers considerable savings.



AQUApipe is a product brand within the AIRpipe Group. We're committed to total system solutions. Our services unit is available to assist with application questions, system design, take-offs, and training within the liquid and compressed gas piping industry.



## Why use AQUApipeline?

- **TOP QUALITY STAINLESS STEEL**, for all industrial fluids.
- **OPTIMISED SOLUTION FROM 18mm TO DN250**, including pipes, fittings and tools.
- **FULL COMPATIBILITY**, with pipes and press tools from the market.
- **BEST VALUE FOR MONEY**, cost-effective and stable price.



You don't have time to deal with welding and threading.



- **AQUApipeline applied in Compressed Air, Vacuum, Process Waters, Die Coolant, Oil, etc.**

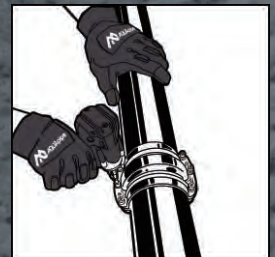


Engineered for  
Superior Performance

## OUR TECHNOLOGY



Clamp connection



## ◀ DN150 to DN250

- Clampshell union connector, quick install & re-assembly.
- Convex ring, allowing for a full-bore inner diameter.
- Active concentric sealing for a leak free connection.
- Superior reliability & longevity.



## 18mm to 108mm ▶

- Built-in sealing, options for gases and liquids.
- Quick-press installation to reduce labour.
- Superior reliability & longevity.



## Compatible M-Profile press fittings 18mm-108mm

- AQUApipe stainless steel pipes 304/1.4301 diameters 18mm to 108mm are compatible with other fittings 18mm to 108mm in material 304/1.4301, 316/1.4401 or 316L/1.4404.
- AQUApipe press fittings 304/1.4301 diameters 18mm to 108mm are compatible with DVGW pipes OD 18mm to 108mm in material 304/1.4301, 316/1.4401 or 316L/1.4404.
- AQUApipe press fittings 18mm to 108mm are compatible with M-profile jaws and collars 18mm to 108mm available from pressing tools suppliers.

Supplier's Brand	Pressing Tool	M-Profile jaws & collars
<b>AIRpipe</b>	302 44 0001 02	18mm-54mm
<b>Novopress</b>	ACO203 (ACO202) ACO203XL(ACO202XL)	18mm-54mm 18mm-108mm
<b>Geberit</b>	ACO 203 / ECO 203 ACO 203 XL	18mm-54mm 18mm-108mm
<b>REMS</b>	Power/Akku-Press ACC Power/Akku-PressXL ACC	18mm-54mm 18mm-108mm
<b>Klauke</b>	UAP332 UAP432	18mm-54mm 18mm-108mm
<b>Rothenberger</b>	Romax4000	18mm-54mm
<b>Virax</b>	2532	18mm-54mm
<b>RIDGID</b>	RP350/351	18mm-54mm
<b>Nussbaum</b>	Type 7 (83100)	18mm-54mm
<b>Viega</b>	Pressgun 6 / 6 Plus	18mm-54mm
Other suppliers on request		

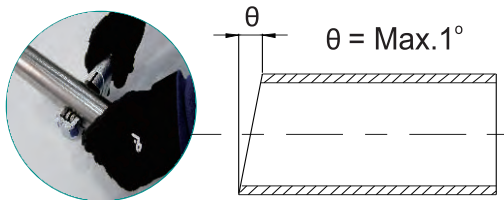
*\*Brand name is the property of the company concerned.*

**Press Identify by Plastic Film 18-108mm**

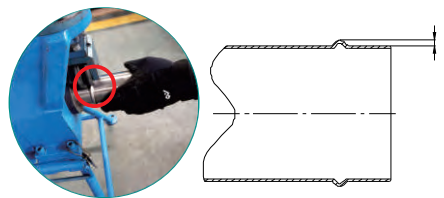


## Unique Clamp type Connection DN150-DN250

### Pipe Cut



### Lug Height for DN150-DN250



Diam. Ø	h (mm)
DN150	3.8~4.0
DN200	3.8~4.0
DN250	3.8~4.0

**Max. Torque for DN150-DN250 Connectors**



Diam. Ø	Bolt	Max. Torque	Allen Key
DN150	M10	65	8mm
DN200	M10	65	8mm
DN250	M12	118	10mm

# Technical Specifications



- Complete system in AISI 304 - EN/DIN 1.4301.
- Pipe diameters from 18mm to DN250, with bending capability.
- Press fittings for diameters 18mm to 108mm: compatible with DVGW pipes and M-profile pressing jaws/collars.
- Clamp connectors for diameters DN150 to DN250: unique connection technology, alternative to welding and dismountable.
- NBR seal suitable for most industrial fluids (EPDM and FKM spare seals).
- Silicone Free, pipe end protected with plastic cap, fittings in plastic bag.
- Max. Working Pressure: 16 bar (13 bar for DN200 and DN250).
- Max. Vacuum level: 1 mbar absolute.
- Working Temperature: -20°C to +100°C.
- CE certificate acc. to European Pressure Equipment Directive 2014/68/EU.
- Meets ISO 8573-1 Class 1-1-1 to convey clean compressed air.
- The materials comply with CE regulation 1935/2004 for food application.
- 10-year warranty.

## Physical Performance of Different Pipes

Pipe Materials	Density (kg/m <sup>3</sup> )	Expansion Factor (10 <sup>-6</sup> m/°C)	Thermal Conductivity (W/m/°C)	Specific Heat Conductivity (J/KG/°C)	Resistivity (Ωkmm <sup>2</sup> /m)	Young's Modulus (kN/mm <sup>2</sup> )	Magnetism
AQUApipes	7930	16	15	500	0.72	200	No
Carbon Steel	7850	11.6	60	60	0.14	210	Yes

## Tensile Strength of Metal Pipes

Pipe Type	Material	Tensile Strength (MPa)	Elongation (%)
AQUApipes	AISI 304	520~750	□35
	AISI 316	520~680	
Carbon Steel pipe	carbon steel	230~290	□30

# PRODUCT LIST

\* Standard Part Numbers for 304 stainless steel with NBR seal, 316L and other seal materials are optional.

## 304 STAINLESS STEEL PIPE



5.8m Length

AQUApipe	Size	OD	Thickness mm
542 00 0001 01	18	18.0	0.8
542 00 0101 01	22	22.0	1.0
542 00 0201 01	28	28.0	1.0
542 00 0301 01	35	35.0	1.2
542 00 0401 01	42	42.0	1.2
542 00 0501 01	54	54.0	1.2
542 00 1401 01	76.1	76.1	1.5
542 00 0701 01	88.9	88.9	1.5
542 00 0801 01	108	108.0	1.5
512 00 1000 01	DN150	159.0	2.0
512 00 1100 01	DN200	219.0	2.5
512 00 1200 01	DN250	273.0	3.0

## PIPE TO PIPE CONNECTOR



AQUApipe	Size
542 02 0000 02	18
542 02 0100 02	22
542 02 0200 02	28
542 02 0300 02	35
542 02 0400 02	42
542 02 0500 02	54
542 02 1400 02	76.1
542 02 0700 02	88.9
542 02 0800 02	108
501 02 1001 05	DN150
501 02 1101 05	DN200
501 02 1201 05	DN250



## 90° ELBOW



AQUApipe	Size
542 03 0000 02	18
542 03 0100 02	22
542 03 0200 02	28
542 03 0300 02	35
542 03 0400 02	42
542 03 0500 02	54
542 03 1400 02	76.1
542 03 0700 02	88.9
542 03 0800 02	108

501 03 1000 03	DN150
501 03 1100 03	DN200
501 03 1200 03	DN250



## IN-OUT 90° ELBOW



AQUApipe	Size
542 03 0001 02	18
542 03 0101 02	22
542 03 0201 02	28
542 03 0301 02	35
542 03 0401 02	42
542 03 0501 02	54
542 03 14 01 02	76.1
542 03 0701 02	88.9
542 03 0801 02	108



### 45° ELBOW



542 04 0000 02	18
542 04 0100 02	22
542 04 0200 02	28
542 04 0300 02	35
542 04 0400 02	42
542 04 0500 02	54
542 04 1400 02	76.1
542 04 0700 02	88.9
542 04 0800 02	108

501 04 1000 03	DN150
501 04 1100 03	DN200
501 04 1200 03	DN250



### IN-OUT 45° ELBOW



AQUApipes

NBR

Size

542 04 0001 02	18
542 04 0101 02	22
542 04 0201 02	28
542 04 0301 02	35
542 04 0401 02	42
542 04 0501 02	54
542 04 1401 02	76.1
542 04 0701 02	88.9
542 04 0801 02	108

### EQUAL TEE



AQUApipes

NBR

Size

542 05 0000 02	18
542 05 0100 02	22
542 05 0200 02	28
542 05 0300 02	35
542 05 0400 02	42
542 05 0500 02	54
542 05 1400 02	76.1
542 05 0700 02	88.9
542 05 0800 02	108

501 05 1000 03	DN150
501 05 1100 03	DN200
501 05 1200 03	DN250



### REDUCING TEE



AQUApipes

NBR

Size

Size

542 07 0100 02	22	18
542 07 0200 02	28	18
542 07 0201 02	28	22
542 07 0300 02	35	18
542 07 0301 02	35	22
542 07 0302 02	35	28
542 07 0400 02	42	18
542 07 0401 02	42	22
542 07 0402 02	42	28
542 07 0403 02	42	35
542 07 0500 02	54	18
542 07 0501 02	54	22
542 07 0502 02	54	28
542 07 0503 02	54	35
542 07 0504 02	54	42
542 07 1401 02	76.1	22
542 07 1402 02	76.1	28
542 07 1403 02	76.1	35
542 07 1404 02	76.1	42
542 07 1405 02	76.1	54
542 07 0701 02	88.9	22
542 07 0702 02	88.9	28
542 07 0703 02	88.9	35
542 07 0704 02	88.9	42
542 07 0705 02	88.9	54
542 07 0801 02	108	22
542 07 0802 02	108	28
542 07 0803 02	108	35
542 07 0804 02	108	42
542 07 0805 02	108	54
542 07 0814 02	108	76.1

## END CAP



AQUApipe

NBR	Size
542 06 0000 02	18
542 06 0100 02	22
542 06 0200 02	28
542 06 0300 02	35
542 06 0400 02	42
542 06 0500 02	54
542 06 1400 02	76.1
542 06 0700 02	88.9
542 06 0800 02	108

501 06 1000 03	DN150
501 06 1100 03	DN200
501 06 1200 03	DN250



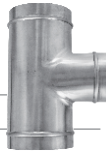
## REDUCING TEE



AQUApipe

NBR	Size	Size
542 07 1005 02	DN150	54
542 07 1008 02	DN150	108
542 07 1105 02	DN200	54
542 07 1108 02	DN200	108
542 07 1205 02	DN250	54
542 07 1208 02	DN250	108

501 07 1110 03	DN200	DN150
501 07 1210 03	DN250	DN150
501 07 1211 03	DN250	DN200



## PIPE REDUCER



AQUApipe

NBR	Size	Size
542 21 0100 02	22	18
542 21 0200 02	28	22
542 21 0201 02	28	22
542 21 0302 02	35	28

542 21 0403 02	42	35
542 21 0504 02	54	42
542 21 1405 02	76.1	54
542 21 0714 02	88.9	76.1
542 21 0807 02	108	88.9

542 21 1008 02	DN150	108
542 21 1108 02	DN200	108



501 21 1110 03	DN200	DN150
501 21 1210 03	DN250	DN150
501 21 1211 03	DN250	DN200



## IN-OUT REDUCER



AQUApipe

NBR	Size	Size
542 22 0100 02	22	18
542 22 0200 02	28	18
542 22 0201 02	28	22
542 22 0300 02	35	18
542 22 0301 02	35	22
542 22 0302 02	35	28
542 22 0400 02	42	18
542 22 0401 02	42	22
542 22 0402 02	42	28
542 22 0403 02	42	35
542 22 0500 02	54	18
542 22 0501 02	54	22
542 22 0502 02	54	28
542 22 0503 02	54	35
542 22 0504 02	54	42
542 22 1405 02	76.1	54
542 22 0705 02	88.9	54
542 22 0714 02	88.9	76.1
542 22 0805 02	108	54
542 22 0814 02	108	76.1
542 22 0807 02	108	88.9

### FEMALE BSP ADAPTER



AQUApipeline NBR	Size	
542 19 0000 02	18	1/2"
542 19 0001 02	18	3/4"
542 19 0100 02	22	1/2"
542 19 0101 02	22	3/4"
542 19 0102 02	22	1"
542 19 0200 02	28	1/2"
542 19 0201 02	28	3/4"
542 19 0202 02	28	1"
542 19 0203 02	28	1 1/4"
542 19 0302 02	35	1"
542 19 0303 02	35	1 1/4"
542 19 0304 02	35	1 1/2"
542 19 0403 02	42	1 1/4"
542 19 0404 02	42	1 1/2"
542 19 0504 02	54	1 1/2"
542 19 0505 02	54	2"
542 19 1406 02	76.1	2 1/2"
542 19 0707 02	88.9	3"

### FEMALE BSP SWIVEL NUT ADAPTER



AQUApipeline NBR	Size	
542 50 0000 02	18	1/2"
542 50 0001 02	18	3/4"
542 50 0101 02	22	3/4"
542 50 0102 02	22	1"
542 50 0202 02	28	1"
542 50 0203 02	28	1 1/4"
542 50 0303 02	35	1 1/4"
542 50 0304 02	35	1 1/2"
542 50 0404 02	42	1 1/2"
542 50 0405 02	42	2"
542 50 0505 02	54	2"

### LONG SLIDE PIPE TO PIPE CONNECTOR



AQUApipeline NBR	Size
542 02 0099 02	18
542 02 0199 02	22
542 02 0299 02	28
542 02 0399 02	35
542 02 0499 02	42
542 02 0599 02	54
542 02 1499 02	76.1
542 02 0799 02	88.9
542 02 0899 02	108

### MALE BSP ADAPTER



AQUApipeline NBR	Size	
542 17 0000 02	18	1/2"
542 17 0001 02	18	3/4"
542 17 0100 02	22	1/2"
542 17 0101 02	22	3/4"
542 17 0102 02	22	1"
542 17 0200 02	28	1/2"
542 17 0201 02	28	3/4"
542 17 0202 02	28	1"
542 17 0203 02	28	1 1/4"
542 17 0302 02	35	1"
542 17 0303 02	35	1 1/4"
542 17 0304 02	35	1 1/2"
542 17 0403 02	42	1 1/4"
542 17 0404 02	42	1 1/2"
542 17 0504 02	54	1 1/2"
542 17 1406 02	76.1	2 1/2"
542 17 0707 02	88.9	3"

### MALE BSP 3-PIECES ADAPTER



AQUApipeline NBR	Size	
542 49 0000 02	18	1/2"
542 49 0001 02	18	3/4"
542 49 0100 02	22	1/2"
542 49 0101 02	22	3/4"
542 49 0102 02	22	1"
542 49 0201 02	28	3/4"
542 49 0202 02	28	1"
542 49 0303 02	35	1 1/4"
542 49 0304 02	35	1 1/2"
542 49 0404 02	42	1 1/2"
542 49 0505 02	54	2"

### BASE 90° ELBOW FEMALE BSP



AQUApipeline NBR	Size	
542 68 0000 02	18	1/2"
542 68 0100 02	22	1/2"
542 68 0101 02	22	3/4"
542 68 0200 02	28	1/2"
542 68 0202 02	28	1"

### MALE BSP 90° ELBOW



AQUApipe	Size	
NBR		
542 15 0000 02	18	1/2"
542 15 0100 02	22	1/2"
542 15 0101 02	22	3/4"
542 15 0201 02	28	3/4"
542 15 0202 02	28	1"
542 15 0302 02	35	1"
542 15 0303 02	35	1 1/4"
542 15 0403 02	42	1 1/4"
542 15 0404 02	42	1 1/2"
542 15 0504 02	54	1 1/2"
542 15 0505 02	54	2"

### FEMALE BSP 90° ELBOW



AQUApipe	Size	
NBR		
542 13 0000 02	18	1/2"
542 13 0001 02	18	3/4"
542 13 0100 02	22	1/2"
542 13 0101 02	22	3/4"
542 13 0201 02	28	3/4"
542 13 0202 02	28	1"
542 13 0303 02	35	1 1/4"
542 13 0404 02	42	1 1/2"
542 13 0505 02	54	2"

### MALE BSP TEE



AQUApipe	Size	
NBR		
542 65 0000 02	18	1/2"
542 65 0001 02	18	3/4"
542 65 0100 02	22	1/2"
542 65 0101 02	22	3/4"
542 65 0200 02	28	1/2"
542 65 0201 02	28	3/4"
542 65 0202 02	28	1"
542 65 0301 02	35	3/4"
542 65 0303 02	35	1 1/4"
542 65 0401 02	42	3/4"
542 65 0404 02	42	1 1/2"
542 65 0501 02	54	3/4"
542 65 0505 02	54	2"

### FEMALE BSP TEE



AQUApipe	Size	
NBR		
542 67 0000 02	18	1/2"
542 67 0001 02	18	3/4"
542 67 0100 02	22	1/2"
542 67 0101 02	22	3/4"
542 67 0200 02	28	1/2"
542 67 0201 02	28	3/4"
542 67 0202 02	28	1"
542 67 0300 02	35	1/2"
542 67 0301 02	35	3/4"
542 67 0302 02	35	1"
542 67 0303 02	35	1 1/4"
542 67 0400 02	42	1/2"
542 67 0401 02	42	3/4"
542 67 0404 02	42	1 1/2"
542 67 0500 02	54	1/2"
542 67 0501 02	54	3/4"
542 67 0505 02	54	2"
542 67 1401 02	76.1	3/4"
542 67 1405 02	76.1	2"
542 67 0701 02	88.9	3/4"
542 67 0705 02	88.9	2"
542 67 0801 02	108	3/4"
542 67 0805 02	108	2"

### FLANGE



AQUApipe	Pipe size	Flange size
NBR		
542 70 0500 02	54	DN50
542 70 1400 02	76.1	DN65
542 70 0700 02	88.9	DN80
542 70 0800 02	108	DN100

### REDUCING FLANGE



AQUApipe	Pipe size	Flange size
NBR		
542 71 0708 02	108	DN80
542 71 0714 02	76.1	DN80
542 71 0807 02	88.9	DN100
542 71 0908 02	108	DN125
542 71 1405 02	54	DN65
542 71 1407 02	88.9	DN65

AQUApipeline

Pipe size

Flange size



501 70 1000 03	DN150	DN150
501 70 1100 03	DN200	DN200
501 70 1200 03	DN250	DN250
501 71 0910 03	DN150	DN125
501 71 1110 03	DN150	DN200
501 71 1211 03	DN200	DN250

### DOUBLE FEMALE BSP LOCKABLE BALL VALVE



AQUApipeline



501 52 0000 02	1/2"
501 52 0100 02	3/4"
501 52 0200 02	1"
501 52 0300 02	1 1/4"
501 52 0400 02	1 1/2"
501 52 0500 02	2"

\*Valve body: AISI 304 ; Seal: PTFE.

### DOUBLE MALE BSP LOCKABLE BALL VALVE



AQUApipeline



501 52 0001 02	1/2"
501 52 0101 02	3/4"
501 52 0201 02	1"
501 52 0301 02	1 1/4"
501 52 0401 02	1 1/2"
501 52 0501 02	2"

\*Valve body: AISI 304 ; Seal: PTFE.

### MALE-FEMALE BSP LOCKABLE BALL VALVE



AQUApipeline



501 52 0002 02	1/2"
501 52 0102 02	3/4"
501 52 0202 02	1"
501 52 0302 02	1 1/4"
501 52 0402 02	1 1/2"
501 52 0502 02	2"

\*Valve body: AISI 304 ; Seal: PTFE.

### LOCKABLE BUTTERFLY VALVE (PRE-ASSEMBLED)



AQUApipeline

NBR

Size

542 52 1401 02	76.1
542 52 0701 02	88.9
542 52 0801 02	108

\*Valve body: AISI 304.

### LOCKABLE BUTTERFLY VALVE (PRE-ASSEMBLED)



AQUApipeline

Size

501 52 1001 03	DN150
501 52 1101 03	DN200
501 52 1201 03	DN250

\*Valve body: AISI 304.

### STAINLESS STEEL THREADED ADAPTER (BSP)



AQUApipeline



501 31 0000 01	1/2"	1/2"
501 31 0100 01	3/4"	3/4"
501 31 0200 01	1"	1"
501 31 0300 01	1 1/4"	1 1/4"
501 31 0400 01	1 1/2"	1 1/2"
501 31 0500 01	2"	2"
501 31 0000 02	1/2"	1/4"
501 31 0100 02	3/4"	1/2"
501 31 0200 02	1"	3/4"
501 31 0100 03	3/4"	1/2"
501 31 0200 03	1"	1/2"

### STAINLESS STEEL PIPE CUTTER

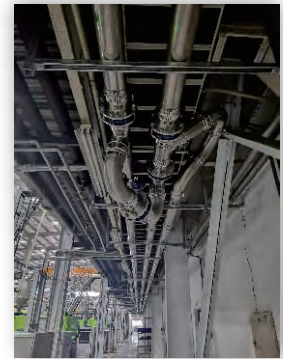


AQUApipeline

501 35 0002 01	18-54mm
----------------	---------

## Main Applications

- **Cooling and Heating Water** -30°C to +110°C (closed circuits).
- **Ethylene Glycol, Die Coolant.**
- **Demineralised Water, Osmosis Water** (closed circuits).
- **Mineral Oil, Vegetable Oil, Light Fuel Oil, Soluble Oil Waste.**
- **Solar installation** up to +110°C.
- **Inert gases** (non-toxic/non-explosive): Nitrogen, CO2, Argon, Helium.
- **Compressed Air** (air quality class 1 to 10).
- **Vacuum** (up to 1mbar absolute).



## Applications NOT COVERED

- Ø Drinking water installations
- Ø Open water circulation systems
- Ø Natural gas installations
- Ø Sprinkler systems
- Ø Water fire main wet or dry



Automotive



Auto Parts



Beverage



Foods



Building Materials



Tobacco



Packaging & Warehouse



Glasses



Medical Treatment



Electronic & Optical



Daily Chemical



Rail Transit



Appliance



Machinery



Household Furniture



Textile






Aerospace



# Applications compatibility

- The Max. Working Pressure for diameters 18mm to DN150 is 16 bar.
- The Max. Working Pressure for diameters DN200 and DN250 is 13 bar.
- Max. vacuum: 1mbar absolute
- Working temperature range & fluid medium table:

Sealing	Description	Color	Working Temperature	Main Applicable Medium
NBR	Nitrile Butadiene Rubber		-20°C to 100°C	Hydraulic Oils, Inert Gases, Compressed Air, Lubricants.
EPDM	Ethylene Propylene Diene Monomer		-20°C to 120°C	Chilled/Cooling Water, Waste Waters, Hydronic Heating, Low Pressure Steam.
FKM/FPM	Viton Fluoroelastomer		-20°C to 200°C	High Temp. Steam & Gas, Solar, Heating, Compressed Air, Acid Solutions, Chemicals, Inert Gases.

## SPARE O-RING SEALS FOR PRESS FITTINGS

NBR	EPDM	FKM	Size
121 60 0002 05	121 60 0003 07	121 60 0004 05	18
121 60 0102 06	121 60 0103 09	121 60 0104 05	22
121 60 0202 05	121 60 0203 07	121 60 0204 05	28
121 60 0302 05	121 60 0303 07	121 60 0304 04	35
121 60 0402 05	121 60 0403 07	121 60 0404 04	42
121 60 0502 05	121 60 0503 07	121 60 0504 05	54
121 60 1402 04	121 60 1403 07	121 60 1404 05	76.1
121 60 0702 05	121 60 0703 07	121 60 0704 05	88.9
121 60 0802 06	121 60 0803 07	121 60 0804 04	108

\* Bag of 10 o-ring seals.

# Press Tools for Quick & Easy Installation



AQUApipe	Description	Range
302 44 0001 02	AQUApipe Battery Hydraulic Tool 32kN to press diameters 18mm to 54mm + 2 Batteries + 1 Charger	18mm-54mm

542 44 0001 01	AQUApipe M-Profile press jaws set 18mm, 22mm, 28mm, 35mm, 42mm & 54mm + 1 adapter for jaws 42mm & 54mm	18mm-54mm
----------------	---	-----------

Novopress	Description	Range
4717580-50	Novopress ACO203 Pressing Tool to press diameters 18mm to 54mm + 2 Batteries 2Ah + 1 Charger	18mm-54mm

45877-50	Novopress M-Profile press jaws set 15mm, 18mm, 22mm, 28mm & 35mm	18mm-54mm
----------	--	-----------

48960-50	Novopress M-Profile press jaws set 42mm & 54mm + adapter ZB203	
----------	---	--

Novopress	Description	Range
4717880-50	Novopress ACO203XL Pressing Tool to press diameters 18mm to 108mm + 2 Batteries 5Ah + 1 Charger	18mm-108mm

48981-50	Novopress M-Profile press jaws set 76.1mm & 88.9mm + adapter ZB221	76.1mm-108mm
----------	---	--------------

48982-50	Novopress M-Profile press jaws set 108mm + adapters ZB221 & ZB222	
----------	--	--

AQUApipe	Description	Range
301 44 0002 01	Stainless Steel Pipe lugging machine	DN150-DN250

511 44 0001 27	Stainless Steel Pipe lugging Jaw DN150	DN150
----------------	--	-------



## 18mm-108mm Press Connection



01

Use pipe cutter to cut the pipe.



02

Deburr and chamfer the pipe end.



03

Visually check the seal is seated.



06

Verify complete press. Finished.



05

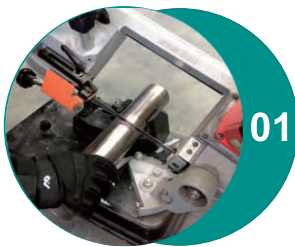
Press the fitting using the proper AQUApipe jaw, and a press tool.



04

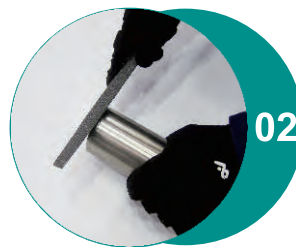
Mark insertion depth.

## DN150-DN250 Clamshell Connection



01

Use cutting machine to cut the pipe.



02

Deburr and chamfer the pipe end.



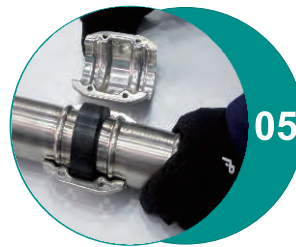
03

Use AQUApipe lugging machine to lug the pipe.



06

Flush the clamshell halves together. Finished.



05

Position the clamshell over the sealing element, ensuring the lugs align with the grooves.



04

Insert the pipe ends into the seal to 2-3 cm on each side.

# Applications

## Industrial Installations



● Compressed Air for Foods



● Cooling water for new Material



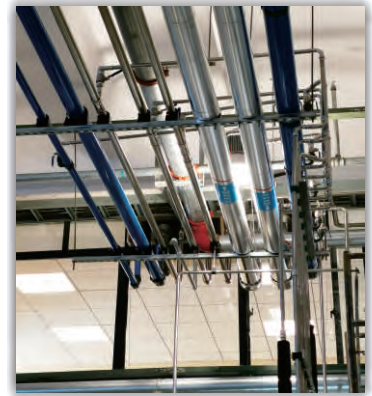
● Oil and Cooling water for Machinery



● Cooling water for Auto Parts.



● Die Coolant for Packaging (DN250).



● Compressed Air, Nitrogen, Argon,  
Cooling Water for LED.



# One-stop Service

AQUApipe provides **“One-stop Service”** worldwide. Customer proximity through one contact person.



## Warranty and Certifications

### 10 Year Warranty:



The AIRpipe Group warrants AQUApipe products to be free of defects in material for a period of ten years from the date of product purchase.

AQUApipe does not warrant the design, assembly or installation of the system, but only the components with an official AQUApipe logo. AQUApipe is not responsible for improper assembly, installation, or for any modifications of the product.

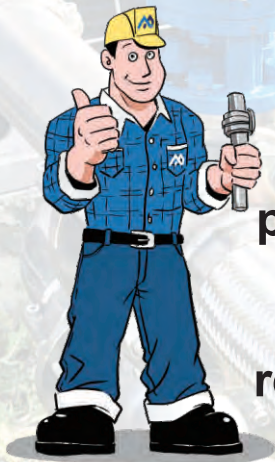
### The warranty is void upon:

1. Failure to follow assembly or installation guidelines;
2. Alteration, misuse or abuse of, or damage to the products;
3. Operation beyond the design range, excessive pressure, stress, or mishandling in any way;
4. Use other than for the intended purpose or in a manner other than specified by AIRpipe.

### Certifications and Compliances:

ISO 9001 version 2015  
 ISO 14001 version 2015  
 ISO 45001 version 2018  
 ASME, UL, TUV, CE, EN and TS





**We provide superior performing compressed air & fluid systems with engineered longevity to reduce operating costs and improve productivity.**

## **AIRpipe EUROPE**

Tel: +33 (0)2 40 05 10 20  
4 impasse Augustin Fresnel, 44800 Saint-Herblain, France  
Email: [contact@airpipe-Europe.com](mailto:contact@airpipe-Europe.com)  
Web: [www.airpipe-europe.com](http://www.airpipe-europe.com)

\* AQUApipes is a product brand in AIRpipe Group.

Publication AIRpipe – #02/2022/AQ/EU/EN  
AIRpipe reserves the rights to modify this documents without prior notice.

